

Grp29

Gauges

Gauge Chrome Trim See Page **63**



Speedometer
Cables

- 10-213P2** Longer length any trans with Speedo drive on either side of trans. Metal housing 70" long **17.00 RP**
- 10-213P1** Long length for all trans with Speedo drive on drivers side of trans. Plastic housing 68" long **17.00 CF**
- CI-SC13** SHORT SPEEDO CABLE 18" long. Use when electronic speedo sender can't be mounted directly to trans. **39.00 C**



Speedo Cable Parts Trans
Original Length
SMALL DRIVEN GEARS

- 55-60 Powerglide & Manual Trans or any trans when used with Long 55-60 gear housing [connects to speedo cable] **\$10.00 Ea.**
- 28-214A** RED 21 teeth [PG w3:55] **28-214B** GREEN 22 t.[3spd w3:70]
- 28-214C** BLUE 20 teeth [Auto w3:36] **28-214D** BROWN 18 teeth
- 28-214E** CLEAR 25 teeth [OD w4:11] **28-214F** YELLOW 24 t.[OD w4:11]

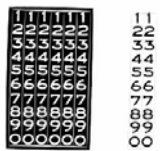
DRIVE Gears [on trans Mainshaft] **\$12.00** Each

- 28-209B** Red 350/400 Turbo trans.
- 28-209E** Black 350 Turbo/Mnl Trans, 1.802"OD
- 28-209F** Black 350 Turbo/Mnl Trans, 1.8880"OD



CI-SN17 Speedo ADAPTER Tremec trans to GM pulse signal generator does not include gear use gear included with trans **31.00**

- 28-212A** SMALL Speedo GEAR HOUSING 61-Pres 350-400 Turbo & Mnl Trans, Shorter than 55-7 Original. **18.00 RP**



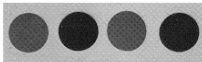
**ODOMETER RESTORATION
DECALS**

6 black mileage number strings & 2 1/10 number strings. 1 extra of each included. Peel off backing with instructions.

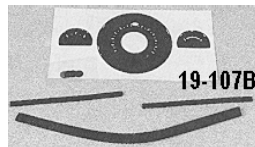
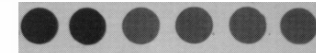
10-297D

- 10-297C** 56, Black numbers on white background **7.50 R**
- 10-297D** 55 & 57, White numbers on black background **7.50 R**

19-106



19-107



WARNING LIGHT DISCS small plain colored lens

- 19-106** 55-6 Red/Green Discs, for Signals, Gen., Oil & High Beam **4.00 R**
- 19-106A** 55-6 Kit Red/Green Discs, w/ 'OIL' & 'GEN' plate & Tubes, for Signals, Gen, oil & High Beam & discs (19-106) Discontinued
- 19-106A1** 55-6 Kit Red/Green Discs, & Tubes, for Signals, Gen, oil & High Beam & discs (19-106) no 'OIL' & 'GEN' plate **12.95**
- 19-107** 57 Discs Only, Red/Green/Blue, set for Turn Signals, Gen. Oil & High Beam lights **4.00 R**
- 19-236** 57 Kit, 2 red, 2 green discs & 'GEN', 'OIL' plates **13.95 R**

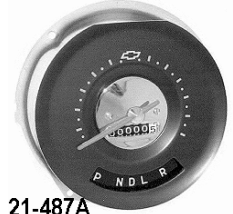
57 Gauge Cluster Background Restoration Set

Includes black decals w/green lines, colored discs, and cluster gaskets
19-107B 57 Auto **25.95** **19-107C** 57 Stick **25.95**

REPRODUCTION GAUGES

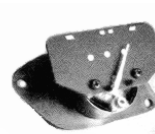


21-486



21-487A

- 21-486** SPEEDOMETER 55-56, repro [odometer is white numerals on black background only] **179.00 R**
- 21-487A** SPEEDOMETER 57, Automatic trans, repro **189.00 R**
- 21-487B** SPEEDOMETER 57, Manual trans, repro **189.00 R**



21-480A



21-483A



21-485A

- 21-480A** 55 GAS GAUGE repro [larger pin] Fargo **95.00 R**
- 21-481A** 56 GAS GAUGE repro [small pin] Fargo **95.00 R**
- 21-482A** 55 TEMP GAUGE, repro Mechanical **89.90 R**
- 21-482B** 56 TEMP GAUGE, repro Electrical **Use 21-482C**
- 21-482C** 56 TEMP GAUGE, repro Electrical Fargo Calibrated to be used with 21-222AC sender [12334869] **95.00 R**
- 21-483** 57 GAS GAUGE, repro **79.90 R**
- 21-483A** 57 GAS GAUGE, repro [Fargo] **95.00 R**
- 21-485A** 57 TEMP GAUGE repro [Fargo] **95.00 R**

57 Stock Gauge Cluster Assembly

Restored Dash Gauge Cluster [Silver Paint] with all new stock parts Includes Fuel, Temp & Speedo gauges & gauge faces, 12-020 gauge bezel set, Assembled and ready to install. **GAUGE-SET57A \$ Call**



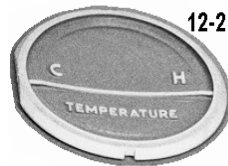
12-221

- 55-56 SPEEDO FACE
- 12-221** Trim arts. **35. R**
- 12-221D** Danchuk **33. R**
- 12-221R** Rte 66 **23. R**



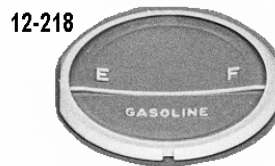
12-216

- 57 SPEEDO FACE
- 12-216** Trim Parts best **38.00 R**
- 12-216D** Danchuk **33.00 R**
- 12-216DR** Rte 66 **24.00 R**



12-217

- 57 TEMP Gauge FACE
- 12-217** Trim Parts **28.00 R**
- 12-217D** Danchuk **24.00 R**
- 12-217R** Rte 66 **16.00 R**



12-218

- 57 GAS Gauge FACE
- 12-218** Trim Parts **28.00 R**
- 12-218D** Danchuk **24.00 R**
- 12-218R** Rte 66 **16.00 R**

REBUILT / RESTORED STOCK GAUGES
Closeout of remaining stock. Call. Used Gauges also available

AUTO TRANS GEAR INDICATORS



- 12-222 55-6 Orig. Power Glide, Trim Parts **17.75 R**
- 12-222D 55-6 Orig. Power Glide, Danchuk **17.00 R**
- 12-381 55-6 Turbohydramatic, Trim Parts **21.75 C**
- 12-381D 55-6 Turbohydramatic, Danchuk **19.90 C**
- 12-381A 55-6 Overdrive Automatics [4 speed] **30.00 C**



- 12-383 57 Orig. Power Glide, Trim Parts **17.75 R**
- 12-383D 57 Orig. Power Glide, Danchuk **19.90 R**
- 12-384 57 Turbohydramatic, Trim Parts **22.00 C**
- 12-384D 57 Turbohydramatic, Danchuk **22.00 C**



- 12-384A 57 Overdrive Automatics [4 speed] **28.00 R**

Flaming River Column Indicators

- FR20010-KIT Gear Indicator 3spd Housing Lens & Pointer **145.00**
- FR20010-KITC Gear Indicator 3spd Chr. Housing Lens & Pointer **175.00**
- FR20010-OVKIT Gear Indicator O/D Housing Lens & Pointer **145.00**
- FR20010-OVKITC Gear Indicator O/D Chr. Housing Lens & Pointer **175.00**

- FR20010IN Gear Indicator Housing only **59.00**
- FR20010INC Gear Indicator Chrome Housing only **78.00**
- FR20010LN Gear Indicator 3 SPD LENS only **30.00**
- FR20010LNO Gear Indicator O/D LENS only **30.00**
- FR20010PO Gear Indicator Pointer only **49.50**



Repro
CLOCKS
Quartz
movement



- 21-160 55-6 Fargo **141.00**
- 21-160D 55-6 Danchuk **159.00**
- 21-163 57 Fargo **155.00**
- 21-163D 57 Danchuk **164.00**

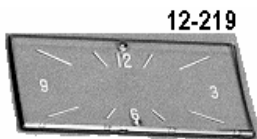


57 CLOCK BEZELS \$45.00 Each R

- 12-212A (Westclox)
- 12-212A1 (New Haven)
- 12-219A (Hamilton)
- 12-219A1 For Dakota Digital clock
- 21-136A 57 Clock Bracket **11.95 RF**

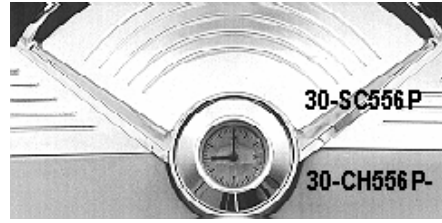


CLOCK
FACE



- 12-128 55-6 [Trim Parts] **23.00 R**
- 12-128D 55-6 [Danchuk version] **22.00 R**
- 12-212 57 (Westclox/New Haven) 1 hole [Trim Parts] **28.75 R**
- 12-212D 57 (1 hole [Danchuk]) **21.00 R**
- 12-219 57 (Hamilton) 2 holes in face [Trim Parts] **29.90 R**

CUSTOM 55-6 CLOCKS



- 30-SC556P SPEAKER GRILL COVER 55-6 **108.00**
- 30-CH556D CLOCK DELETE 55-6 fills the clock hole Billet **106.00**

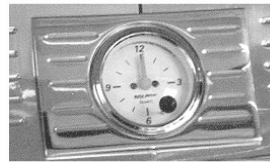
Classic Instruments

55-6 QUARTZ CLOCK W/Polished Bezel

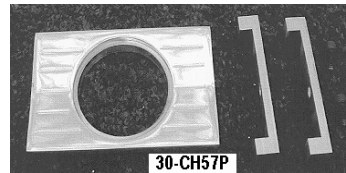
- 30-CH556P-W White Face Black Needles **230.00**
- 30-CH556P-WR White Face Red Needle **237.00**
- 30-CH556P-T Tan Face Red Needle **230.00**
- 30-CH556P-B Black Face White Needle **230.00**
- 30-CH556P-BO Black Face Orange Needle **237.00**
- 30-CH556P-S Gray Face Red Needle **230.00**

- 30-CH556PH Billet Clock HOUSING only for Classic Instruments clock, clock not included, 55-56 **106.00**

CUSTOM 57 CLOCKS



- 57 ROUND CLOCK \$230.00
- Classic Instruments Clock polished Billet Mount Plate #30-CH57P
- 30-CH57P-B Black, White pointers
- 30-CH57P-W White, Black pointers
- 30-CH57P-T Tan, Red pointers
- 30-CH57P-S Gray, Red pointers



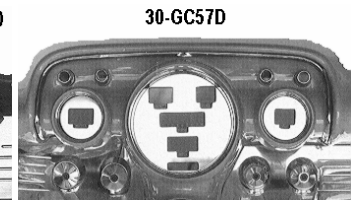
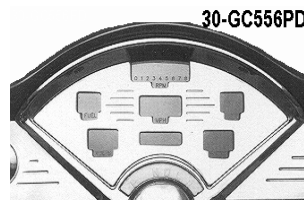
- 30-CH57P Billet Round CLOCK MOUNT PLATE, mounts Classic Instruments clock in 57 dash **106.00**

- 30-CDP57P Billet CLOCK DELETE Panel 57, Ball milled **106.00**

BILLET GAUGE FACE MASKS All polished for stock gauges



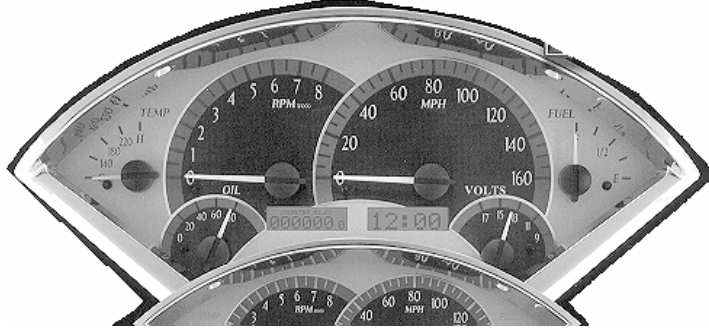
- 30-GC556P 55-6 for Stock Gauge Face **\$114.00**
- 12-020J 57 Auto set w/ gauge Id's **\$85.00**
- 12-020K 57 Stick set w/ gauge Id's **\$85.00**



- 30-GC556PD 55-6 for Dakota Digital Gauges 7 hole **\$50.00**
- 30-GC556PD2 55-6 for Newest Dakota Digital 8 holes **\$50.00**
- 30-GC57D 57 for Dakota Digital Gauges, polished **\$75.00**

55-56 Dakota Digital VHX Hybrid Instrument Systems

Fully lit needles, backlit faces and highly visible LCD message centers \$**895.00**



- | | |
|--|----------------------------------|
| VHX-55C-C-B Carbon Fiber / Blue Display | VHX-55C-C-R / Red Display |
| VHX-55C-S-B Satin Alloy / Blue Display | VHX-55C-S-R / Red Display |
| VHX-55C-K-B Black Alloy / Blue Display | VHX-55C-K-R / Red Display |
| VHX-55C-K-W Black Alloy / White Display | |



GSS-1 Shift Indicator Sending Unit, for electronic gearshift in all Dakota Digital Sets: works with all auto transmissions. Has integral neutral safety & back up light switch **129.90**

DIM-1 Rotary control for your digital dash to enhance the dimming feature for night time driving, with aluminum bezel & knob **34.95**

Dakota Digital Hybrid VHX Clocks

Requires use of original or aftermarket bezels. Made for VHX Hybrid Instrument Sets, won't work as standalone or with other Dakota Digital gauges.



Numerical Display Clock [VLK] \$**170.**
VLK-55CCB Carbon fiber BLUE Light **VLK-55CCR** Carbon RED Light

VLK-55CSB Satin alloy BLUE Light **VLK-55CSR** Satin RED Light
VLK-55CKB Black Alloy BLUE Light **VLK-55CKR** Black RED Light
VLK-55CKW Black Alloy WHITE Light

Analog Pointer Display [VLC] \$**170.**
VLC-55CCB Carbon fiber BLUE Light **VLC-55CCR** Carbon RED Light
VLC-55CSB Satin alloy BLUE Light **VLC-55CSR** Satin RED Light
VLC-55CKB Black Alloy BLUE Light **VLC-55CKR** Black RED Light
VLC-55CKW Black Alloy WHITE Light

Dakota Digital 55-56 RETROTECH Gauge Sets



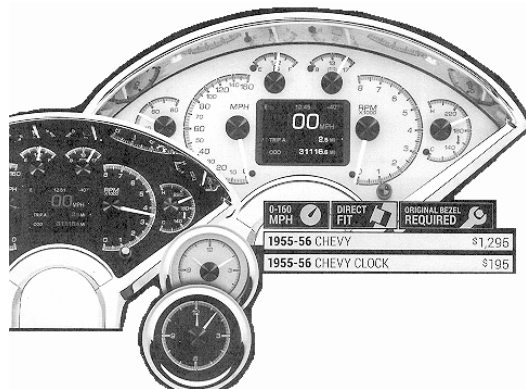
Original appearance when off, When on, all the latest technology shows up including shared tech from the HDX series, multiple lighting colors etc. 55-6 has small Tach in center gauge across the top. Matching Clocks are complete assemblies for this gauge set only.

Gauge Cluster **\$1595.** Matching Clock \$**195.**
RTX-55C-X 55-56 Gauge Cluster **RLC-55C-X** 55-56 Matching Clock

Dakota Digital HDX series Gauges

Highlights: Personalization and usability Allows user to select favorite lighting color for gauge readings and needles as well as TFT message center displays. Fully adjustable RGB LEDs. Gauge needle hubs are black nickel plated spun-aluminum. With the system dialed in, including calibration of speedo & fuel gauge, it can calculate your remaining fuel range, expressed as miles to empty. With optional buzzer, a warning tone for each reading at a user defined set point can sound to coincide with the dead faced red warning lights incorporated into the gauge faces.

\$1495.
HDX-55C-K 55-6 Black Alloy Face **HDX-55C-S** 55-6 Silver Alloy Face



55-56 Dakota Digital BAR GRAPH Gauges

Includes bar graph Tach, Speedo, Odometer, Tripmeter, Oil, Fuel, Volt, Water gauges. 6 gauge kit fits in original dash cluster housing including senders except tank sender. **Automatic Trans need to order GSS-1 sender** for trans indicator built into instrument face. Cluster Bezels in Grp 12.

STR3A-55C--Specify color Blue or Green \$675.

55-6 Dakota Digital CLOCK \$95.

Assembly required. Kit fits into original clock housing.

Does not include bezel **CLK-55C: Blue or Green**



55-56
Dakota
Digital

Dakota Digital Hookup Accessories



DAK-SGI-5 Universal Speedo Signal Interface Can recalibrate 8k to 250k ppm electronic speedo pulse rates, for adapting different signals to required signals for cruise control or computer controlled fuel injection.

\$79.95

21-500447 WIRING CONNECTION KIT 55-7 Gauge Set to stock harness ea. Use if you don't want to replace your whole underdash harness

\$67.00

Quick Disconnect Underdash Harness for custom gauge clusters. Internal alternator. Replaces stock underdash harness, gauge installation simpler. [American Autowire] **\$260.00**

21-DDH55 for 55 **\$387.** **21-DDH56** for 56 **\$387.** **21-DDH57** for 57 **\$371.**

GSS-1 Shift Indicator Sending Unit, for electronic gearshift selector in Dakota Digital Dash: works with all auto transmissions. Has integral neutral safety & back up light switch **\$129.90**

Classic Instruments BelEra Instrument Cluster



BelEra

See color pages in back of book

Textured face finish with smooth gauge sweep area. Direct bolt into stock dash bezel. New glass lens. 140MPH speedo Works with stock fuel sender. Includes senders except fuel. 8000 RPM Tach. Detailed Instruction manual. 5 year warranty Easy plug & play programming **MADE IN USA**
*Specify transmission to get correct speedo sender.



BE0755B

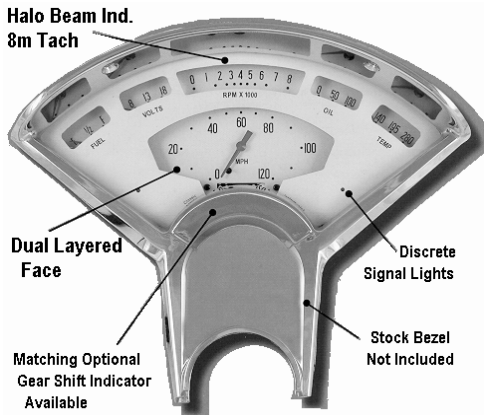
\$1000.00

- BE0155BB**
- BE0155WW**
- BE0155T**
- BE0155G**

- Black face White Pointers
- White face Black Pointers
- Tan face Cherry Red Pointers
- Gray face Cherry Red Pointers

OPTIONS: *Matching Automatic Gear Selector with sender available as Standard 3 speed [BE07] or Overdrive [BE06]
See page 232. \$262.to \$277. Ea.

Classic Instruments BelEra II



Halo Beam Ind.
8m Tach

Dual Layered Face

Matching Optional Gear Shift Indicator Available

Discrete Signal Lights

Stock Bezel Not Included

The Bel Era II features superior LED lighting with a nostalgic to original instrument layout. Incorporated in the cluster are discreetly located turn indicators and a "halo" glow beam indicator. This unit bolts directly into the stock 55-56 chrome bezel. The unit comes complete with a new glass lens and wired for installation with a quick disconnect. Pushbutton calibration on a marked mile or "real time".

MADE IN USA \$ N/A

- BT01B** Black w/ White letters White pointers
- BT01G** Gray w/White letters Orange pointers
- BT01T** Tan w/ Dark letters Red pointers
- BT01W** White w/ Black letters Black pointers
- LEDBE2** **LED Dimmer Kit Option 70.00**

Classic Instruments Belera III



Belera III

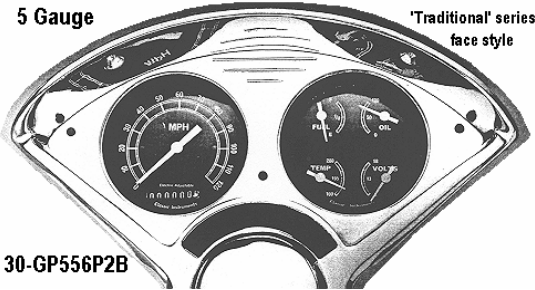
BET00B

55-6 direct fit, near stock design with 4 real gauges across the top: Temperature, Battery Volts, Gas, Oil Pressure and Speedometer, no tach. Bezel Not Included. Features Classic Instruments ZST, Led lights with built in dimmer, built in ECM signal filter switch, turn signals and high beam light and a single connector wiring harness for installation ease. A new feature is a fuel sender selector switch that allows for compatibility with any fuel resistance range via a simple switch controlled during installation. Includes a Glass lens. Also available are matching clocks and optional gear selector with or without overdrive. **MADE IN USA \$1139.00**

- BET00B** Black, White Pointers **BET00G** Gray, Red Pointers
- BET00T** Tan, Red Pointers **BET00W** White, Black Pointers

55-6 Billet GAUGE PANELS with Classic Instruments®

5 Gauge



30-GP556P2B

'Traditional' series
face style

5 Gauge Bolt-In Panel Includes Gauges & Senders except Fuel. All electric w/electronic speedo, 0-30 ohm fuel gauge for stock tank sender. Includes 2- 3 3/8" Gauges w/ Curved Glass (Speedo in one, Oil, Water, Volts, Gas in the other), Senders (Speedo, Oil, Water), Polished Gauge Panel & 3 LED Lamps for Turn signal & High Beam. This is a nice, dependable set with **USA made** quality. Color pages in back of book for choices, Flat Glass optional [a little cheaper actually]. Does not include dash cluster housing.

*Specify transmission you are using to get correct speedo sender.

Hot Rod or Traditional Series

- 30-GP556P2B Black face, White pointers \$ 701.00
- 30-GP556P2G Tan face, Red pointers \$ 701.00
- 30-GP556P2W White face, Black pointers, Classic White \$ 701.00
- 30-GP556P2S Gray face, Red pointers \$ 747.00
- 30-GP556P2SW Gray face, White pointers \$ 701.00

Call for others

21-500447 WIRING CONNECTION KIT 55-7 to stock harness

Use if you don't want to replace your underdash harness \$ 67.00

Underdash Harness with quick disconnect for custom gauge kits or panels

55: 21-DDH55, \$387. 56: 21-DDH56, Each \$387.

30-GP556P2S Gauge Panel Face only polished aluminum for 2 3-3/8 gauges \$105.



30-556TK TACH KIT 55-6

Large 3-3/8" chrome cup mount Classic Instruments Tach w/ bolt on hidden mounting bracket. Bracket bolts to bottom speedo bezel screws behind stock snap-on cover. Standard series gauge \$241.00

6 Gauge



30-GP556P2B-TK

Hot Rod Series

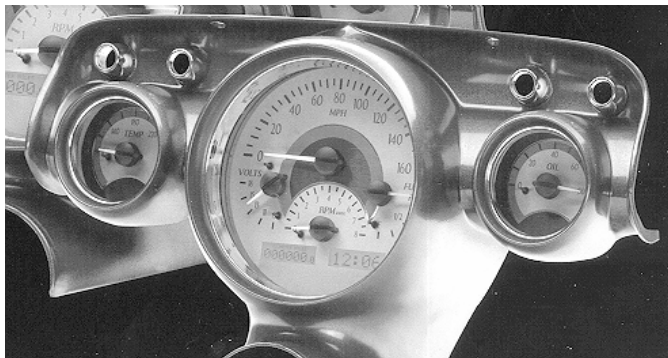
6 Gauge Panel w/integral tach

55-6 GAUGE PANEL with Classic instruments 3-3/8" 'Ultimate' Speedo & Tach in one unit. Works with all known signals, trans & computer. Push button calibration. Real time fine tune adjustment. Built in harness that plugs in back of unit. Polished Panel. Call for details & other colors. MADE IN USA

30-GP556P2B-TK 6 Gauge Panel W/integral Tach, Black Face White Pointers, Hot Rod Series \$ 867.00

Dakota Digital 57 VHX Hybrid Instrument Systems

Fully lit needles, backlit faces and highly visible LCD message centers \$ 895.00



- VHX-57C-C-B Carbon Fiber / Blue Display
- VHX-57C-S-B Satin Alloy / Blue Display
- VHX-57C-K-B Black Alloy / Blue Display
- VHX-57C-C-R / Red Display
- VHX-57C-S-R / Red Display
- VHX-57C-K-R / Red Display

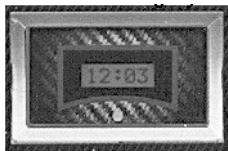
VHX-57C-K-W Black Alloy / White Display

Automatics see GSS-1 Shift Indicator Sensor Page 225



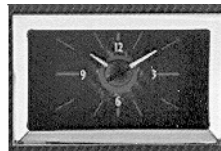
DIM-1 Rotary control for your digital dash to enhance the dimming feature for night time driving, with aluminum bezel & knob \$ 29.95

Dakota Digital Hybrid VHX Clocks



VLK Digital style
Numerical Display
\$ 150.00

- VLK-57CCB Carbon fiber BLUE Light
- VLK-57CCR Carbon RED Light
- VLK-57CSB Satin alloy BLUE Light
- VLK-57CSR Satin RED Light
- VLK-57CKB Black Alloy BLUE Light
- VLK-57CKR Black RED Light
- VLK-57CKW Black Alloy WHITE Light

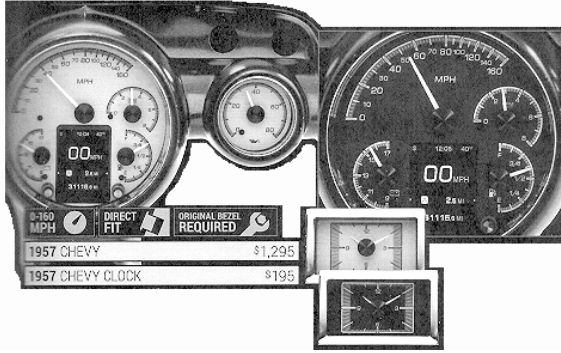


VLC POINTER DISPLAY
Analog Display
\$ 150.00

- VLC-57CCB Carbon fiber BLUE Light
- VLC 57CCR Carbon RED Light
- VLC 57CSB Satin alloy BLUE Light
- VLC 57CSR Satin alloy RED Light
- VLC 57CKB Black Alloy BLUE Light
- VLC 57CKR Black Alloy RED Light
- VLC 57CKW Black Alloy WHITE Light

Requires use of original or bezel #12-219A1 Pg 224. Made for VHX Hybrid Instrument Set, won't work as standalone or with other Dakota Digital gauges.

Dakota Digital 57 HDX series Gauges



Highlights: Personalization and usability Allows user to select favorite lighting color for gauge readings and needles as well as TFT message center displays. Fully adjustable RGB LEDs. Gauge needle hubs are black nickel plated spun-aluminum. With the system dialed in, including calibration of speedo & fuel gauge, it can calculate your remaining fuel range, expressed as miles to empty. With optional buzzer, a warning tone for each reading at a user defined set point can sound to coincide with the dead faced red warning lights incorporated into the gauge faces. **\$1295.00**

HDX-57C-K 57 Black Alloy Face HDX-57C-S 57 Silver Alloy Face

Automatics see GSS-1 Shift Indicator Sensor Page 225

Dakota Digital 57 Retrotech Gauge Sets

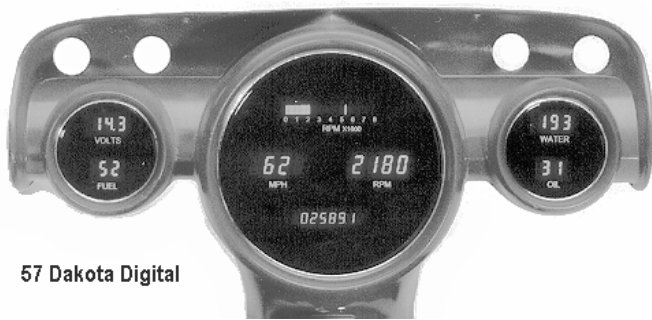


Original appearance when off, When on, all the latest technology shows up including shared tech from the HDX series, multiple lighting colors etc. 57 Tach is Numerical Lighted Band under Speedo Numbers around center hub. 57 Alternator & Oil Pressure are Numerical Lighted Bands left and right on bottom of speedometer cluster. Matching Clocks are complete assemblies for this gauge set only. Automatics see GSS-1 Shift Indicator Sensor Page 225

RDX-57C-X 57 Gauge Cluster **1295.00**
RLC-57C-X 57 Matching Clock **195.00**

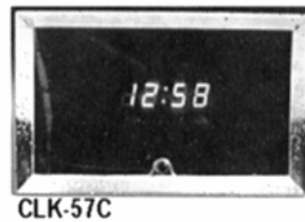
57 Dakota Digital Bar Graph Gauges

Includes bar graph Tach, Speedo, Odometer, Tripmeter, Oil, Fuel, Volt, Water gauges. 6 gauge kit fits in original dash cluster housing includes senders except tank sender. **Cars w/Automatic Trans need to order GSS-1 sender** to use trans indicator built into instrument face. . New Instrument Cluster Bezels see Group 12.



57 Dakota Digital

STR3A-57C--Specify color 57 INSTRUMENTATION KIT
 Blue or Green **\$639.00**



CLK-57C

57 Dakota Digital CLOCK Assembly required. Kit fits into original clock housing Includes new bezel. Blue, Green, Red or Amber
CLK-57C-... Specify Color
\$125.00

GSS-1Shift Indicator Sending Unit, for electronic gearshift selector in Dakota Digital Dash: works with all auto transmissions. Has integral neutral safety & back up light switch **\$99.90**



21-500447

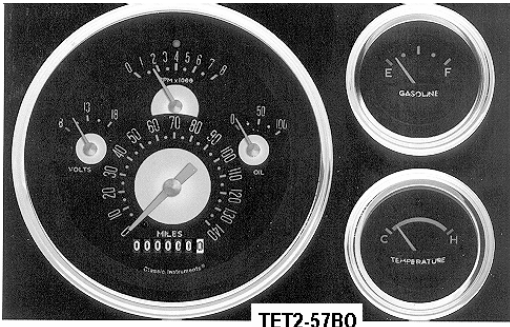
recalibrate 8k to 250k ppm electronic speedo pulse rates, great for adapting different signals to required signals for cruise control or computer controlled fuel injection. **\$79.95**

21-500447 Gauge Set WIRING CONNECTION KIT 55-7 to stock harness ea. Use if you don't want to replace your whole underdash harness **\$35.00**

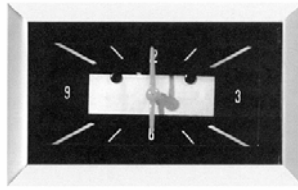
21-DDH57 57 UNDERDASH HARNESS with quick disconnect for custom gauge clusters. For internal alternator. Replaces underdash harness, makes gauge installation simpler. [Made by American Autowire] **\$260.00**

DAK-SGI-5 Universal Speedo Signal Interface Dakota Digital, can

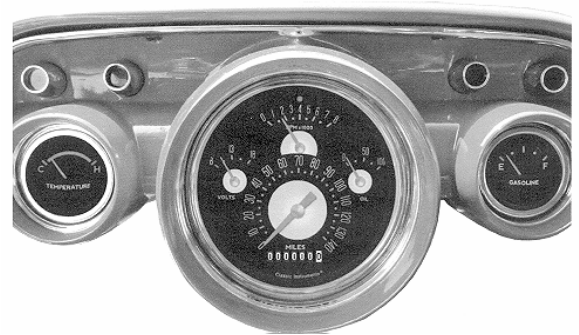
Classic Instruments 57 'Tetra 2' Custom Gauge Set



TET2-57BO



TET2-57BO-CLK

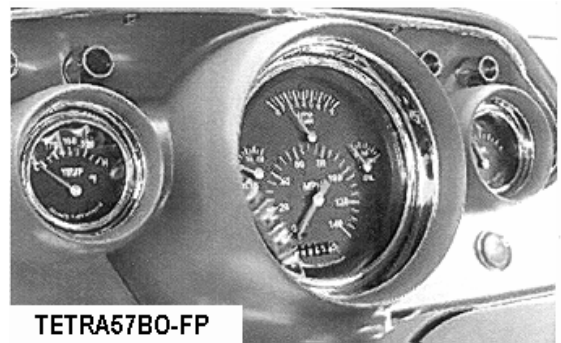


Black thru-illuminated face, Modern electronics, Silver accented orange pool cue pointers with spun hubs. Flat Glass. Fuel, Oil, Temp, Volt, Speedometer & Tachometer. OE styled green indices that improve lighting. Classic Instruments USA made quality

TET2-57BO OE 57 Gauge Package, 'Tetra 2' Black face Orange Pointers **1013.**

TET2-57BO-CLK 57 Clock, matching clock **320.**

Classic Instruments 57 'Tetra' Custom Gauge Set



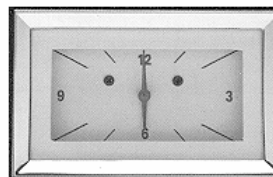
TETRA57BO-FP

Includes 6 Gauges in 3 sealed housings that fit directly into the 3 gauge holes in your stock 57 cluster. Gauges have special bezels for a real factory look. Use with the original gauge chrome bezel rings available new or you can paint your old ones to match your cluster. The 4-gauge center unit includes an electronic Speedometer, 8 grand Tach, Volt and Oil pressure gauges. The side gauges are Water Temp and Fuel (30 ohm to work with your stock sender). In addition the center unit has a built in High Beam light. Pushing a remote button does speedo programming. Senders provided include speed, water & oil. SPECIFY TRANS to be sure you get the right speedo sender. Choose Curved or Flat glass [Curved glass is extra]. Polished Pointer Hubs are extra. This is a high quality unit with proper night illumination that you will be able to appreciate as soon as you open the box. **MADE IN USA.** See color pages in back of book for color options. Customs made to order at additional cost.

TETRA57B-F BLACK w/ WHITE Pointers Flat Glass **\$ 988.00**
TETRA57B-C BLACK w/ WHITE Pointers Curved Glass **\$ 995.00**

TETRA57W-F WHITE w/ BLACK Pointers Flat Glass **\$ 988.00**
TETRA57W-C WHITE w/ BLACK Pointers Curved Glass **\$ 995.00**

TETRA57G-F GRAY w/CHERRY RED Pointers Flat Glass **\$ 988.00**
TETRA57T-F TAN w/CHERRY RED Pointers Flat Glass **\$ 995.00**



TETCLK-57T

57 Tetra matching Clock

\$297.

TETCLK-57S Gray, Cherry Red Pointers **TETCLK-57T** Tan, Cherry Red Pointers
TETCLK-57W White, Black Pointers **TETCLK-57B** Black, White Pointers

Other Gauge Accessories & Gauge Options



Column Shift Indicator

Plain Acrylic is 2-side tape stick on [no bezel, all others have bezel that is screwed on. Will fit most columns. [Available w/chrome or black powder coat bezel special order]
ID-260000010 3 spd Acrylic **39.00** **ID-2600050010** 4 spd Acrylic **39.00**

Flaming River Column Indicators order with column

- FR20010-KIT** Gear Indicator 3spd Housing Lens & Pointer **113.93**
- FR20010-KITC** Gear Indicator 3spd Chr. Housing Lens & Pointer **153.93**
- FR20010-OVKIT** Gear Indicator O/D Housing Lens & Pointer **113.93**
- FR20010-OVKITC** Gear Indicator O/D Chr. Housing Lens & Pointer **153.93**
- FR20010IN** Gear Indicator Housing only **49.00**
- FR20010INC** Gear Indicator Chrome Housing only **59.00**
- FR20010LN** Gear Indicator 3 SPD LENS only **23.73**
- FR20010LNO** Gear Indicator O/D LENS only **23.73**
- FR20010PO** Gear Indicator Pointer only **41.54**



BE0755B

55-56 Automatic Gear Selector with electronic sender
 Fits in stock location in an automatic gauge housing **\$277.00**
 Matches 'BelEra'
 Instrument Cluster Gauge Sets

Standard 3 speed

- BE0755B** Black/White Pointer **BE0655B** Black/White Pointer
- BE0755W** White/Black Pointer **BE0655W** White/Black Pointer
- BE0755T** Tan/Cherry Red Pointer **BE0655T** Tan/Cherry Red Pointer
- BE0755G** Gray/Cherry Red Pointer **BE0655G** Gray/Cherry Red Pointer

Overdrive 4 speed

55-56 Automatic Gear Selector with electronic sender
 Belera III **\$277.00**

Standard 3 speed

- BET07B** Black/White Pointer **BET06B** Black/White Pointer
- BET07W** White/Black Pointer **BET06W** White/Black Pointer
- BET07T** Tan/Cherry Red Pointer **BET06T** Tan/Cherry Red Pointer
- BET07G** Gray/Cherry Red Pointer **BET06G** Gray/Cherry Red Pointer

Overdrive 4 speed



57 SPEEDOMETER PLATE
STYLE #3. Mounts Autometer 3 1/8" speedometer and 2 1/8" tach or other gauge in single plate recessed into and installed into front. Uses stock speedo trim ring.

30-57SP3P

May be installed in a variety of positions but to mount gauges straight up and down 2 screw bosses on back inside of cluster housing must be ground down about 3/16". Has 1 small hole for indicator light [High Beam] LED light included. Includes mounting hardware & instructions.

- 30-57SP3P** Polished **\$78.00** **30-57SP3M** Plain **\$40.00**



30-57SP1P

57 Speedometer Plate **Style #1.** Made to mount 3 3/8" speedometer from front. 2 holes for 2 indicator lights LED Lights included. Includes mounting hardware & instructions.

- 30-57SP1P** Polished **\$49.**
- 30-57SP1M** Plain **\$35.**



30-GC556P3
3 Gauge Panel with 3 LED indicators Does not include gauges or bezel. Use w/1-3 1/8" & 2-2" Autometer gauges
\$156.00

- AM1396** ArcticWhite 3 1/8 SPEEDO Cable driven **169.00**
- AM1318** ArcticWhite 2 1/16 FUEL GAUGE 0-30 ohm **79.00**
- AM1337** ArcticWhite 2 1/16 WATER w/Sender **79.00**

Call for other options



Hot Rod Series 'HR'



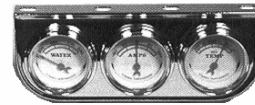
Traditional Series 'TR'

Classic Instruments 2-1/8 Diameter Gauges quality **Made In the USA.** Hot Rod series shown, available in all other series

- CI-HR14SLF** Fuel Gauge 0-30 Ohm for stock sender Black Face White Pointer **91.00**
- CI-HR26SLF** Water Temp Gauge 140-260 degree use sender CI-SN24 3/8 NPT, or SN25 1/2 NPT [NPT is National Pipe Thread] **84.00**
- CI-HR30SLF** Volt Gauge **84.00**
- CI-HR81SLF** Oil Pressure Gauge 0-100 psi use CI-SN52 sender **84.00**

Classic Instruments Underdash 2 & 3 gauge panels Sets

- 21-510HR** 2 Gauge Fuel & Water Temp 3/8npt sender **241.00**
- 21-510HR-1** 2 Gauge Fuel & Water Temp 1/2npt sender **241.00**
- 21-510HR-2** 2 Gauge Fuel & Oil Pressure w/sender **268.00**
- 21-510HR-3** 2 Gauge Volt & Oil Pressure w/sender **220.00**



Underdash Gauge Panel

- 21-510HR-4** 3 Gauge Fuel, Water Temp, Oil Pressure w/sender Water 3/8 NPT **399.00**
- 21-510HR-5** 3 Gauge Fuel, Water Temp, Oil Pressure w/sender Water 1/2 NPT **327.00**



AM-3232



Tach Cup

- CI-MTUD2** 2 Gauge Underdash Chrome PANEL 2 1/8" gauges **33.00**
- CI-MTUD3** 3 Gauge Underdash Chrome PANEL 2 1/8" gauges **40.00**
- CI-MTUD4** 2 Gauge Underdash Black PANEL 2 5/8" gauges **37.00**
- CI-MTUD5** 3 Gauge Underdash Black PANEL 2 5/8" gauges **40.00**
- AM3232** 2 Gauge Underdash Black PANEL 2 5/8" gauges **29.00**
- AM3233** 3 Gauge Underdash Black PANEL 2 5/8" gauges **35.00**
- CI-MT02C** Tach Mounting CUP 2 1/8" dia., Chrome **98.00**
- CI-MT02B** Tach Mounting CUP 2 1/8" dia., Black **72.00**
- CI-MT51** Tach Mounting CUP 3 3/8", Chrome **65.00**
- CI-MT52** Tach Mounting CUP 3 3/8", Mat Black **72.00**
- CI-TM556** HIDDEN TACH MOUNT Bracket Kit, 55-6, bolt-on This mount can be used with 2" cup & small tach for Automatic cars using stock bezel indicator **35.00**

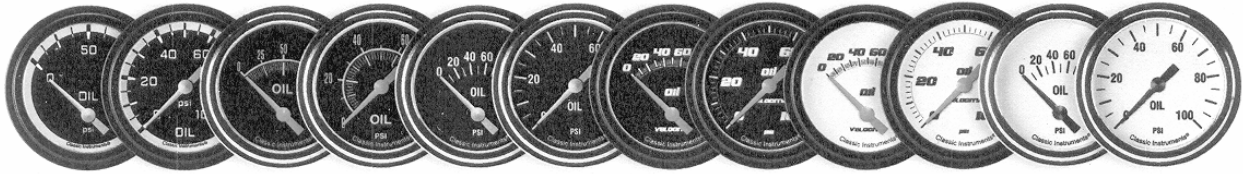
57 Stock Gauge Cluster Assembly

Restored Dash Gauge Cluster [Silver Paint] with all new stock parts
Includes Fuel, Temp & Speedo gauges & gauge faces, 12-020 gauge bezel
set, Assembled and ready to install

Powerglide GAUGE-SET57A, Manual GAUGE-SET57A
Call for Quote

CLASSIC INSTRUMENTS®

Made in USA Color Pictures in back of book.



Classic Instruments. All electric gauges. 2-1/8" or 2-5/8". FULL SWEEP now available across the entire line. Fuel gauges available in: 0-30, 16-158, 0-90, 75-10 or 240-33 ohm. 55-57 stock gas tank sender is 0-30 ohm. Other gauges: Oil pressure, Water Temp, Volt, Gear Indicator 3 spd or OD, Fuel pressure, Air Pressure, Oil Temp, Trans Temp & Clocks. 3 3/8" & 5" Speedometer & Tach, Speedo/Tach combinations, also Quads (4 gauge). Real glass lenses; Flat or Curved [extra cost]. Stainless Bezels. LED lighting options. Pointer style & colors optional. Endless options available. See the Classic Instruments web site for additional pictures & info classicinstruments.com. We then can work with you to be sure you get what you want.



Standard Gauge Styles.

- 'HR' Hot Rod Series; Black face, White Poolcue Pointer
- 'WH' White Hot Series; White face, Black Pool Cue Pointer
- 'CW' Classic White Series; White face, Blk Teardrop Pointer
- 'VT' Vintage Series; Tan face, Cherry Red Arrow Pointer
- 'SG' SG Series; Gray face, White Poolcue Pointer
- 'TR' TR Series; Black face, White Arrow Pointer

Some Individual GAUGES

**Add Gauge Style Code Letters from Pictures to part number when ordering
Prices shown are standard 2-1/8 gauges. Standard series flat glass with standard pointer for series chosen. Options: Curved Glass add \$6. per gauge, different Pointer Style or Color add \$7. per gauge.

CI-**80	TACH 3 3/8" 8000 RPM	151.00
CI-**55	SPEEDO 3 3/8", electronic requires sender [not included]	259.00
CI-**14	FUEL Gauge 2 1/8", 0-30 ohm use with stock sender	75.00
CI-**30	VOLT Gauge 2 1/8"	70.00
CI-**81	OIL PRESSURE Gauge 2 1/8", use with senders above	70.00
CI-**26	WATER TEMP Gauge 2 1/8", use with senders above	70.00
CI-**90	QUARTZ CLOCK 2 1/8"	124.00

All special orders are not returnable & must be paid in full in advance.
Pointer colors available are: White, Black, Dk Cherry Red, Orange.

SENDERS Call for others

CI-SN52	Oil Pressure SENDER, 100 PSI	46.00
CI-SN54	Oil Pressure SENDER, 80 PSI	46.00
CI-SN57	Oil Pres. Sender BUSHING installation KIT, GM	32.00
CI-SN21	Oil Temp Sender 1/2-20 [Oilpan]	58.00
CI-SN12	Water Temp Sender 12mm	38.00
CI-SN22	Water Temp SENDER 1/8 NPT	43.00

CI-SN23	Water Temp SENDER 1/4 NPT	43.00
CI-SN24	Water Temp SENDER, 3/8 Pipe thread	33.00
CI-SN25	Water Temp SENDER, 1/2 Pipe thread	33.00
CI-SN16	Speedo 16 Pulse SENDER	113.00
CI-SN16C	Speedo 16 Pulse SENDER 90 Degree	152.00
CI-SN16F	Speedo 16 pulse Sender + Ford Sender Adapter	113.00
CI-SN83	Universal Twin Wire Lead for speedometer sender to the speedometer [Classic instruments]	33.00
CI-SN96	Speedometer Sender 8000 pulse hard coupler Attach to trans where speedometer cable went. Use with CI-SN83 above.	139.00
CI-SN18	Sender VSS Pigtail Tremec w/builtin 2pin female	33.00
CI-SN18R	700R4 VSS Pigtail Connector	39.00
CI-SN17	Tremec Trans sender adapter	39.00
CI-SN17GEAR	Speedometer Driven Gear for CI-SN17 adapter for Tremec Trans includes 18 tooth gear retainer & O ring	29.00
CI-SN34	Fuel Gauge Link to correct Ohm mismatch	167.00
CI-SN35	Tank Sender 240-33 ohm adjustable 6-24" Vertical	58.00
CI-SN36	Tank Sender 0-30 ohm adjustable 6-24" Vertical	58.00
CI-SN38	Tank Sender 0-90 ohm adjustable 6-24" Vertical	58.00

Halo Lights

Turn Signals & High Beam [under diffuser, not visible until illuminated]
LEDHTH **150.00**

LED Upgrade Kits

Classic instruments offers an LED light upgrade that offers superior illumination within the gauge packages listed below. The upgrade to the LED light package also offers you the ability to also dim the lighting to your needs. Halo Lights, Turn Signals & High Beam Indicators, Warning Lights. Each option is available in different colors

LED00	5 Gauge Set 3-3/8 Speedo, 2-1/8 Fuel Temp Volts & Oil	85.00
LED01	6 Gauge Set 3-3/8 Speedo, Tach, 2-1/8 Fuel Temp Volts & Oil	88.
LED02	2 Gauge Set 3-3/8 Speedo & Quad Fuel Temp Volts & Oil	79.00
LED54	6 Gauge Set 5" Speedo, 2-1/8 Fuel Temp Volts & Oil	87.00

CI-HR50SLC 'SPEEDTACHULAR' 4-5/8 Speedo & Tach combo
HR Series Black w/White Pointers Curved glass \$737.00
Fits 57 Cluster center hole. This new speedo-tach unit is all electric and includes an electronic odometer. All functions controlled via a remote mount interface box. Available in all six standard series designs. Made in USA. High Beam & Turn Signal indicator lamps available extra charge..



Classic Instruments 5" Speedometer & Tach

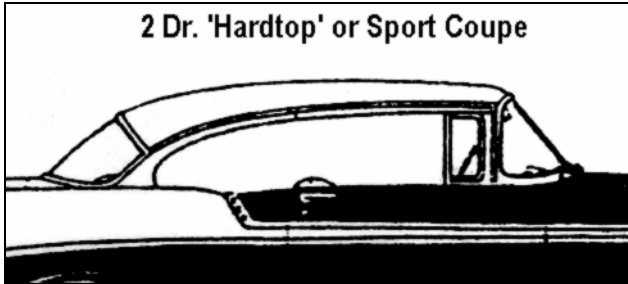
Autometer Gauges also available

*Specify transmission you are using to get correct speedo sender. Sender not included.

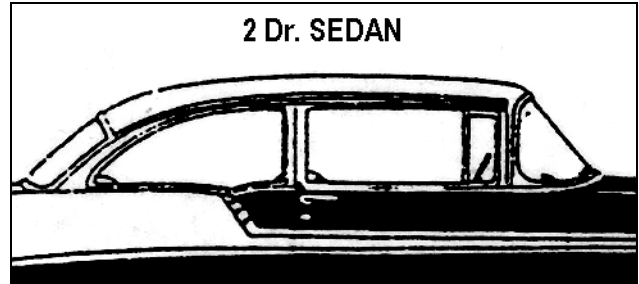
Identifying Your Car

The Difference Between a 'HARDTOP' & a SEDAN

A HARDTOP has chrome window frames, the door & quarter glass close against each other, when open glass area is open like a convertible.

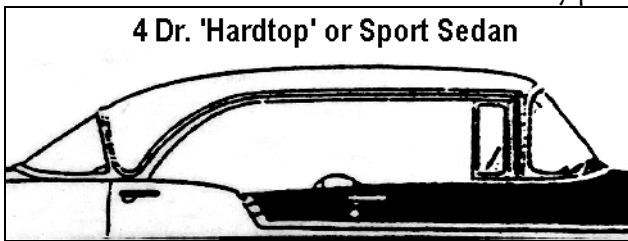


2 Dr. 'Hardtop' or Sport Coupe

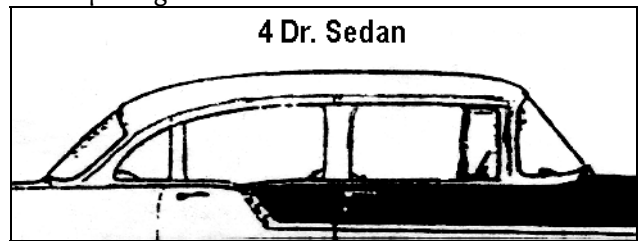


2 Dr. SEDAN

A SEDAN has no glass frames, the doors or body itself frames the glass, when windows are down, the body post divides the openings.



4 Dr. 'Hardtop' or Sport Sedan



4 Dr. Sedan

55 Paint Numbers

Not all combinations were available on all models

Two Color Exteriors

*First Color is Upper
Second Color is Lower*

- 599 Seamist Green / Neptune Green
- 600 Skyline Blue / Glacier Blue
- 601 Neptune Green / Shoreline Beige
- 602 India Ivory / Skyline Blue
- 603 Autumn Bronze / Shoreline Beige

- 604 Neptune Green / Seamist Green
- 605 India Ivory / Seamist Green
- 606 Shoreline Beige / Autumn Bronze
- 607 Glacier Blue / Shoreline Beige
- 608 India Ivory / Black
- 610 Glacier Blue / Skyline Blue
- 612 India Ivory / Regal Turquoise
- 613 Shoreline Beige / Neptune Green
- 614 Shoreline Beige / Glacier Blue
- 615 Shoreline Beige / Gypsy Red
- 617 India Ivory / Gypsy Red
- 624 India Ivory / Shadow Gray
- 627 Shadow Gray / Coral

- 628 Black / India Ivory
 - 629 India Ivory / Coral
 - 631 India Ivory / Harvest Gold
 - 682 India Ivory / Cashmere Blue
 - 684 India Ivory / Navaho tan
 - 685 India Ivory / Dusk Rose
- One Color Exteriors
- 585 Black
 - 586 Seamist Green
 - 587 Neptune Green
 - 588 Skyline Blue
 - 589 Glacier Blue
 - 590 Copper Maroon

- 591 Shoreline Beige
- 592 Autumn Bronze
- 593 India Ivory
- 594 Shadow Gray
- 596 Gypsy Red
- 598 Regal Turquoise
- 626 Coral
- 630 Harvest Gold
- 683 Cashmere Blue

55 MODEL IDENTIFICATION



55 SEDAN DELIVERY - Model 1508 - Style 1271



55 '150' 2 Dr. WAGON - Model 1529 - Style 1263F



55 '150' 2 Dr. SEDAN - Model 1502 - Style 1211



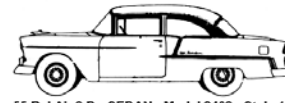
55 '210' 2 Dr. SEDAN - Model 2102 - Style 1011
55 '210' DELRAY - Model 2124 - Style 1011A



55 '210' 2 Dr. WAGON - Model 2129 - Style 1063F



55 '210' 4 Dr. WAGON - Model 2109 - Style 1062F



55 Bel Air 2 Dr. SEDAN - Model 2402 - Style 1011D



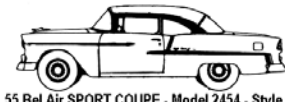
55 '210' SPORT COUPE - Model 2154 - Style 1037



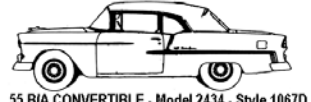
55 Bel Air 4 Dr. WAGON - Model 2409 - Style 1062DF



55 '150' 4 Dr. SEDAN - Model 1503 - Style 1219



55 Bel Air SPORT COUPE - Model 2454 - Style 1037D



55 BIA CONVERTIBLE - Model 2434 - Style 1067D



55 '210' 4 Dr. SEDAN - Model 2103 - Style 1019



55 Bel Air 4 Dr. SEDAN - Model 2403 - Style 1019D



55 NOMAD WAGON - Model 2429 - Style 1064DF

56 Paint Numbers

Not all combinations were available on all models

Two Color Exteriors

First Color is Upper/Second Color is Lower

- 696 Black / Crocus Yellow
- 700 India Ivory / Sierra Gold
- 701 India Ivory / Black

- 702 Sherwood Green / Pinecrest Green
- 703 Nassau Blue / Harbor Blue
- 705 India Ivory / Pinecrest Green
- 706 India Ivory / Sherwood Green
- 707 India Ivory / Nassau Blue
- 708 India Ivory / Dusk Plum
- 710 India Ivory / Twilight Turquoise
- 711 India Ivory / Matador Red
- 715 Dune Beige / Matador Red
- 717 Crocus Yellow / Laurel Green
- 721 India Ivory / Dawn Gray

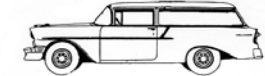
- 754 India Ivory / Tropical Turquoise
- 755 Black / Calypso Cream
- 756 Calypso Cream / Grecian Gold
- 757 Imperial Ivory / Inca Silver
- 756 Calypso Cream / Grecian Gold
- 757 Imperial Ivory / Inca Silver
- 763 Adobe Beige / Matador Red

- 690 Sherwood Green
- 691 Nassau Blue
- 692 Harbor Blue
- 693 Dusk Plum
- 694 India Ivory
- 695 Crocus Yellow
- 697 Matador Red
- 698 Twilight Turquoise
- 749 Tropical Turquoise
- 750 Calypso Cream
- 752 Inca Silver

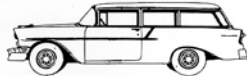
One Color Exteriors

- 687 Black
- 688 Pinecrest Green

56 MODEL IDENTIFICATION



56 SEDAN DELIVERY - Model 1508 - Style 1271



56 150 2 Dr. WAGON - Model 1529 - Style 1263F



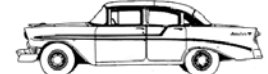
56 210 2 Dr. WAGON - Model 2129 - Style 1063F



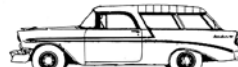
56 210 4 Dr. WAGON - Model 2109/2119 - Style 1062F/1062FC



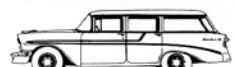
56 210 4 Dr. SEDAN - Model 2103 - Style 1019



56 Bel Air 4 Dr. SEDAN - Model 2403 - Style 1019D



56 NOMAD WAGON - Model 2429 - Style 1064



56 Bel Air 4 Dr. WAGON (8 pass.) - Model 2419 - Style 1062DF



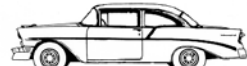
56 210 4 Dr. Sport Sedan - Model 2113 - Style 1039



56 Bel Air 4 Dr. Sport Sedan - Model 2413 - Style 1039D



56 150 2 Dr. SEDAN - Model 1502 - Style 1211
56 150 Business Coupe - Model 1512 - Style 1211B



56 210 2 Dr. SEDAN - Model 2102 - Style 1011
56 210 DELRAY - Model 2124 - Style 1011A



56 210 Sport Coupe - Model 2154 - Style 1037



56 Bel Air Sport Coupe - Model 2454 - Style 1037D



56 Bel Air 2 Dr. SEDAN - Model 2402 - Style 1011D



56 150 4 Dr. SEDAN - Model 1503 - Style 1219



56 Bel Air CONVERTIBLE - Model 2434 - Style 1067D

57 Paint Numbers

Not all combinations were available on all models

Two Color Exteriors

First Color is Upper/ Second Color is Lower

- 807 India Ivory / Black
- 808 Imperial Ivory / Inca Silver
- 809 Larkspur Blue / Harbor Blue
- 810 India Ivory / Larkspur Blue

- 811 India Ivory / Trop. Turquoise
- 812 Highland Green / Surf Green
- 813 India Ivory / Surf Green
- 815 Black / Colonial Cream
- 816 India Ivory / Colonial Cream
- 817 India Ivory / Canyon Coral
- 818 Adobe Beige / Sierra Gold
- 819 India Ivory / Matador Red
- 820 Colonial Cream / Laurel Green
- 822 Imperial Ivory / Dusk Pearl

One Color Exteriors

- 793 Black
- 794 Imperial Ivory
- 795 Larkspur Blue
- 796 Harbor Blue
- 797 Surf Green
- 798 Highland Green
- 799 Tropical Turquoise
- 800 Colonial Cream
- 801 Canyon Coral

- 802 Matador Red
- 803 Coronado Yellow
- 804 Inca Silver
- 805 Sierra Gold
- 806 Adobe Beige
- 821 Dusk Pearl
- 823 Laurel Green

57 MODEL IDENTIFICATION



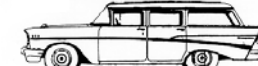
57 SEDAN DELIVERY - Model 1508 - Style 1271



57 150 2 Dr. WAGON - Model 1529 - Style 1263F



57 210 2 Dr. WAGON - Model 2129 - Style 1063F



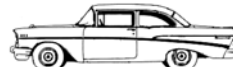
57 210 4 Dr. WAGON - Model 2109 - Style 1062F
Model 2119 - Style 1062FC



57 Bel Air 4 Dr. WAGON - Model 2409 - Style 1062DF



57 NOMAD - Model 2429 - Style 1064



57 210 2 Dr. Sedan - Model 2101/2102 - Style 1011



57 Bel Air 2 Dr. Sedan - Model 2402 - Style 1011D



57 150 4 Dr. Sedan - Model 1503 - Style 1219



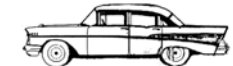
57 210 4 Dr. Sedan - Model 2103 - Style 1019



57 210 SPORT COUPE - Model 2154 - Style 1037



57 Bel Air SPORT COUPE - Model 2454 - Style 1037D



57 Bel Air 4 Dr. Sedan - Model 2403 - Style 1019D



57 210 Sport Sedan - Model 2113 - Style 1039



57 CONVERTIBLE - Model 2434 - Style 1067D

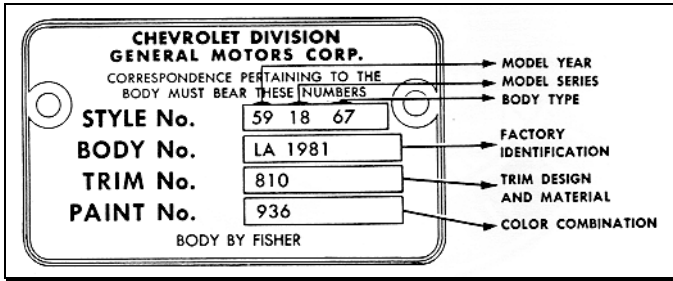


57 150 Business Coupe - Model 1512 - Style 1211B
57 150 2 Dr. SEDAN - Model 1502 - Style 1211



57 Bel Air Sport Sedan - Model 2413 - Style 1039D

COWL TAG



Style... The first 2 numbers are the year the second set of numbers is for model & series ID.

Body... The letter or letters designate the body plant

- A- Atlanta, GA
- B- Baltimore, MD
- F- Flint, MI
- J- Janesville, WI
- K- Kansas City, MO
- VN- Van Nuys, CA.
- L- Los Angeles, CA
- N- Norwood, OH
- O- Oakland, CA
- S- St. Louis, MO
- T- Tarrytown, NY

The numbers are the actual numerical production at each particular plant in order, they begin each model year, each plant with '1'.

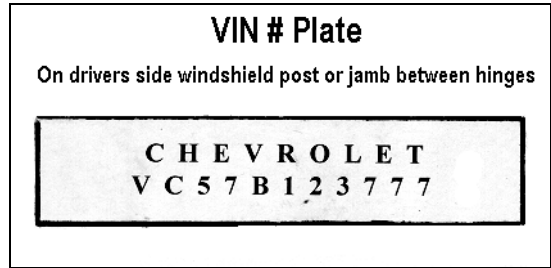
Trim This is the interior trim # that tells you the color & material, see Group 26 for the match to your #

Paint This set of numbers sometimes followed by a letter is for exterior paint color or colors.

ACC This is for factory installed accessories, not all accessories were shown on the cowl tag. Some acc. codes are: AC- Air Conditioning,

CP- Padded Dash, EZI- Tinted Glass, WS- Power Windows & Seat.

VIN Tag



The first letter or letters; the 'V' is for V8, all cars w/V8 were designated on the tag, 6 cyl. cars only had an A, B, C, or D. A is a '150', B is a '210', C is a Bel Air, D is a Sedan Delivery. The first 2 numbers after the letter or letters is the year of the car. The letter following the year of the car is the assembly plant.

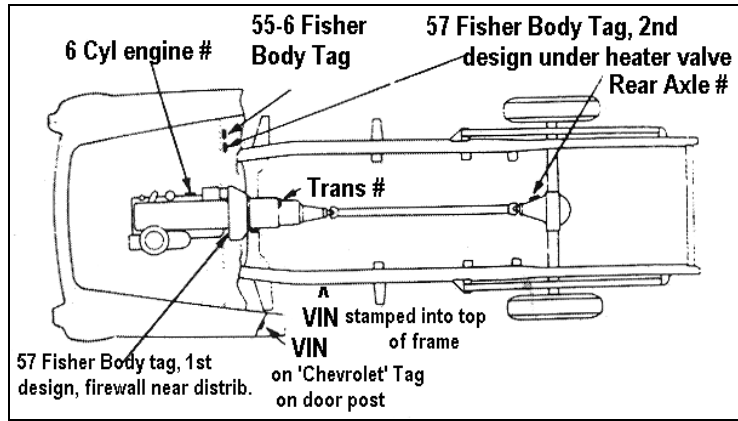
- A- Atlanta, GA
- B- Baltimore, MD
- F- Flint, MI
- J- Janesville, WI
- K- Kansas City, MO
- L- Los Angeles, CA
- N- Norwood, OH
- O- Oakland, CA
- S- St. Louis, MO
- T- Tarrytown, NY

The last numbers are the serial # of the car, this number started with #1001 in 55 & 56, #100001 in 57 at each assembly plant. We can determine the approximate production date of your car from this #. Please call if necessary.

The VIN # was also stamped in top of frame rail on drivers side of car approximately under the front seat area.

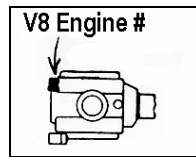
Paint #'s on Model ID pages, CALL for additional information. INTERIOR TRIM #'S ARE INCLUDED IN GROUP 26

ENGINE IDENTIFICATION



CASTINGS #'S SEE INSIDE BACK COVER!!!

REAR AXLE IDENTIFICATION				
SERIES	TYPE	PLANT I.D.	G. & A.	Buffalo
PASS.	3-Speed .		AA	BA
PASS.	Automatic Transmission.		AB	BB
PASS.	Overdrive		AC	BC
PASS.	3-Spd. w Positraction (3.55 ratio)		AK	
PASS.	Overdrive w Positraction (4.11 ratio)		AL	
PASS.	A.T. w, Positraction (3.36 ratio)		AM	



Original Radiator Numbers	
3133042	6 cyl Stick, 55-6
3133043	6 cyl Automatic, 55-6
3133044	V8 Stick, 55
3133045	V8 Automatic, 55
3136157	V8 Stick, 56-7
3136158	V8 Automatic, 56-7
3136569	6 cyl Stick, 57

1955

SOURCE Designation:	Type Designation	Description
F-Flint T-Tonawanda.		
MODEL YEAR Designation:		
55 Series:15-21-2400		
'235' 6 Cyl. - 3-Speed O D.	Z	'265' V8 - 3-Speed Trans. G
'235' 6 Cyl. - H D Clutch Taxi	ZC	'265' V8 - Overdrive GC
'235' 6 Cyl. - 3-Speed -	ZH	'265' V8 - 3-Speed Air Con. GF
'235' 6 Cyl. HD Clutch Aluminum Camshaft Gear	ZJ	'265' V8 - Overdrive -A/C GQ
'235' 6 Cyl. - Powerglide	Y	'265' V8 - H.D. Clutch GJ
		'265' V8 -H.D. Clutch A/C GK
		'265' V8 - 3-Spd Duals 4B GL
		'265' V8 - 3-Spd Duals 4B AC GM
		'265' V8 OD Dual 4B GE
		'265' V8 O/drive Dual 4B AC GN
		'265' V8 - Powerglide F
		'265' V8 - P/G Duals 4B FB
		'265' V8 - Powerglide A/C FC
		'265' V8 - Powerglide- Dual Exhaust - 4B - AC FD
		55 Series: 2900 (Corvette)
		'235' 6 Cylinder Powerglide. YG
		'265' 8 Cylinder- Powerglide FG
		'265' 8 Cylinder 3-Speed GR

*MODEL YEAR DESIGNATION is 255 for Corvette 8 Cylinder with 3-Speed Transmission. EXAMPLE: The 65th 2400 Series six cylinder engine built at Flint to be used with Powerglide would be stamped 0001065F55Y. If built at Tonawanda it would have serial 0001065T55Y.

ENGINE IDENTIFICATION continued**1956**

SOURCE Designation:	'265' V8 - Overdrive	GC	'265' V8 - Powerglide -4BC	FB	EXAMPLE: The 50th 2100 Series 8 cylinder engine for overdrive transmission built at Flint carries Serial No. 000105OF56GC. If built at Tonawanda the serial number would be 000105OT56GC. NOTE: After October 1, 1956, past model series engines will show the latest year of application immediately preceding the source letter.	
F-Flint T-Tonawanda.	'265' V8 - 4BC	GL	'265' V8 - P/G -Dual 4BC	FH		
MODEL YEAR Designation:	'265' V8 - Dual 4BC	GS	'265' V8 - Powerglide -A/C	FC		
56 Series:15-21-2400	'265' V8 Dual 4BC/Hi-Lift Cam	GT	'265' V8 - P/G -A/C - 4BC	FO		
	Type		56 Series: 2900 ('Vette)			
Description	Description	Type	'265' V8 - 3-Speed Trans	GV		
'235' 6 Cyl. - 3-Speed O D	Z	'265' V8 - H.D. Clutch .	GJ	'265' V8 Dual 4BC/Hi-Lift Cam		GU
'235' 6 Cyl. - H.D. Clutch	ZC	'265' V8 - H.D. Clutch -A/C	GK	'265' V8 w/Dual 4BC		GR
'235' 6 Cyl. - Powerglide	Y	'265' V8 - Overdrive -4BC	GE	'265' V8 - Powerglide		FK
'265' V8 - 3-Speed Trans	G	'265' V8 - O/drive -A/C - 4BC	GN	'265' V8 - Powerglide		FG
		'265' V8 - Powerglide	F	'265' V8 - P/G-Dual 4BC		

1957

SOURCE Designation:		Type	'283' V8 - Overdrive -4BC	EC	'283' V8 - Dual 4B	EH
F-Flint T-Tonawanda.	Description	Description	'283' V8 - Powerglide	F	'283' V8 - FI -Hi-Lift Cam	
57 Series:15-21-2400	'235' 6 Cyl. - 3-Speed OD	Z	'283' V8 - Powerglide -A/C	FA	w/A/C Air Intake	EL
STARTING UNIT NUMBER: The three or four digit number following the source designation will designate the calendar month and date produced. The last two digits will always designate the date, viz., (01) for the first day of the month, (10) for the 10th day etc. The one or two digits preceding the date produced will designate the month, viz., (1) for January, (11) for November.	'235' 6 Cyl. - 3-Speed & OD	A	'283' V8 - Powerglide -4BC	FC	'283' V8 - Fuel Inj Hi-Lift Cam	EN
	'235' 6 Cyl. - H.D. Clutch	AD	'283' V8 - P/G -Dual 4BC	FD	'283' V8 - Fuel Injection	EM
	'235' 6 Cyl. - Powerglide	B	'283' V8 - P/G Fuel Injection	FJ	'283' V8 - P/G -Dual 4BC	FG
	'265' V8 - 3-Speed Trans	C	'283' V8 - P/G -4BC - A/C	FE	'283' V8 - Powerglide	FH
	'265' V8 - Overdrive	CD	'283' V8 - Turboglide	G	'283' V8 - P/G Fuel Injection	FK
	'265' V8 - H. D. Clutch .	CE	'283' V8 - Turboglide -4BC	GC		
	'283' V8 - 4BC	E	'283' V8 - T/G -Dual 4BC	GD	EXAMPLE: A standard 2400 series type engine if built at Flint on March 1 would carry serial No. F301A. If built at Tonawanda on October 19 the number would be T1019A.	
	'283' V8 - Dual 4BC	EA	'283' V8 - T/G Fuel Injection	GF		
	'283' V8 Dual 4BC/Hi-Lift Cam	EB	57 Series: 2900 ('Vette)			
	'283' V8 - Fuel Injection	EJ	'283' V8 - 3-Speed Trans.- 4B	EF		
	'283' V8 - Fuel Inj Hi-Lift Cam	EK	'283' V8 Dual 4B -HI-Lift Cam	EG		

TECH HELP**Radiator & Overheating Questions****Call if help needed**

Thermostats; only gets the engine up to the specified coolant temperature so that in the winter your heater will provide heat, If your engine in the summer wants to run 200 degrees it will do so whether you have a 160 or 180 or 195 thermostat in it. If you use a 160 thermostat in winter you won't get much heat from your heater. You cannot rely on your 40 year old stock gauge, so do not base questions on your system on the gauge alone. Install a good aftermarket gauge or have your original restored and you will feel a lot more confident about the condition of your coolant. If you are not boiling over putting coolant on the ground you don't have a problem. Are you putting coolant on the ground ?

The temperature of coolant your system can hold is controlled by the radiator cap you are using. The original radiator in your classic used a 7 lb. Cap, so the boiling point of these systems (about 230 degrees) is low by today's standard as most vehicles today use a 15 lb. Cap (about 250 degree). Normal engine operating temperature in summer without AC running is 190 to 200 degrees for most engines, in traffic this would go up 10 degrees or so, with AC on this could go to 220 or more. If your system will hold this temp in traffic without going higher it is functioning good and needs no further attention. You can raise the boiling point by putting a higher pressure cap on the radiator, up to 13 lbs. on a repo rad that has the original style tank, this is not a good idea on an original (40 year old) radiator as the tank sides could get bulged out permanently by the higher pressures generated if the engine gets close to overheating. If the parts in your current system are functioning correctly as noted above but your radiator cannot hold coolant in summer traffic, then you need to upgrade it.

To Figure Your Engine Coolant Boiling Point:

1. Water boils at 212°.
2. Add 3° for each pound of your radiator cap, so... if you have a 7 LB cap that would be 21°.
3. Add that (21°) to the 212 which makes a Boil over point of 233°. With a 13 LB cap it would be 251°

Gas Gauge / Tank Sender Problems

Many Gas Gauge problems relate to the Gas tank Ground. Before you check anything else make sure the tank itself or at least the sender itself has a ground to the frame. It may be necessary in some cases to add a wire from one of the sender mounting screws to the frame. 55-57's use a 0 to 30 ohm setup that is not the most accurate arrangement. If you are having problems with accuracy you can correct this by adjusting the sender arm. This is a trial and error process that you can do after you are sure that both the gauge and the sender are basically functional. For example if the gauge is reading lower than the amount of gas that you know is in the tank, you would raise the gauge reading by bending the float arm down.

To Check GAS Gauge: 1.Take wire off of tank sender, leave it in the air not touching anything. Turn key on, gauge should go to past full.

2.Touch sender wire to frame {full ground}, turn key on, gauge should read empty. 3.If wiring and tank ground is good then sender is not working.

Trouble shooting GAS Gauge:

FUEL GAUGE Checklist with Ignition 'ON'.

If the gauge pegs itself to the right, above full, some possibilities are:

1. Brown wire is off back of gauge.
2. Poor connection dash to tail lamp harness plug.
3. Brown wire is broken between gauge and sending unit.
4. Brown wire is off of the sending unit.
5. Bad tank to body ground.
6. Sending unit is bad.

If the gauge pegs itself below empty, some possibilities are:

1. Brown and pink wires are swapped on back of gauge ('55 & '56)
2. Brown and tan wires are swapped on back of gauge ('57)

If the gauge reads 'E' all the time, some possibilities are:

1. Brown sender wire is shorted to ground.
2. Sending unit is 'stuck' or defective.

If the gauge won't budge when the ignition is turned on, some possibilities are:

1. Pink wire is off of gauge or switch is defective ('55-'56).
2. Tan wire is off of gauge or switch is defective ('57).
3. Gauge is bad.

If the gauge 'bumps' but will not read at 'E' or above, it may be:

1. Gauge is bad.